

## RELIEF VALVES

### RVD10

Gas or Liquid

275 Bar Maximum Inlet Pressure

~0.5 - 250 Bar Set Pressure Range

-50°C to +140°C

Easy to adjust set pressure

DN 10

Ø9.5mm Nominal Bore

Weight: 0.97Kg (Stainless Steel)

The versatile RVD10 Differential Pressure Relief Valve is compact, robust, and offers a wide range of set pressures.

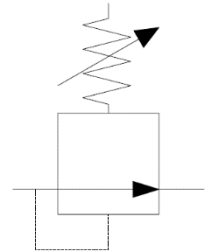
The seat and valve design ensure a smooth and controlled pressure relief and excellent re-seat.

The valve has been designed to be used with a wide range of gasses and liquids. Component parts are precision machined and include fine finishes where required to ensure excellent leak tight integrity even with the most searching of mediums.

### MATERIALS

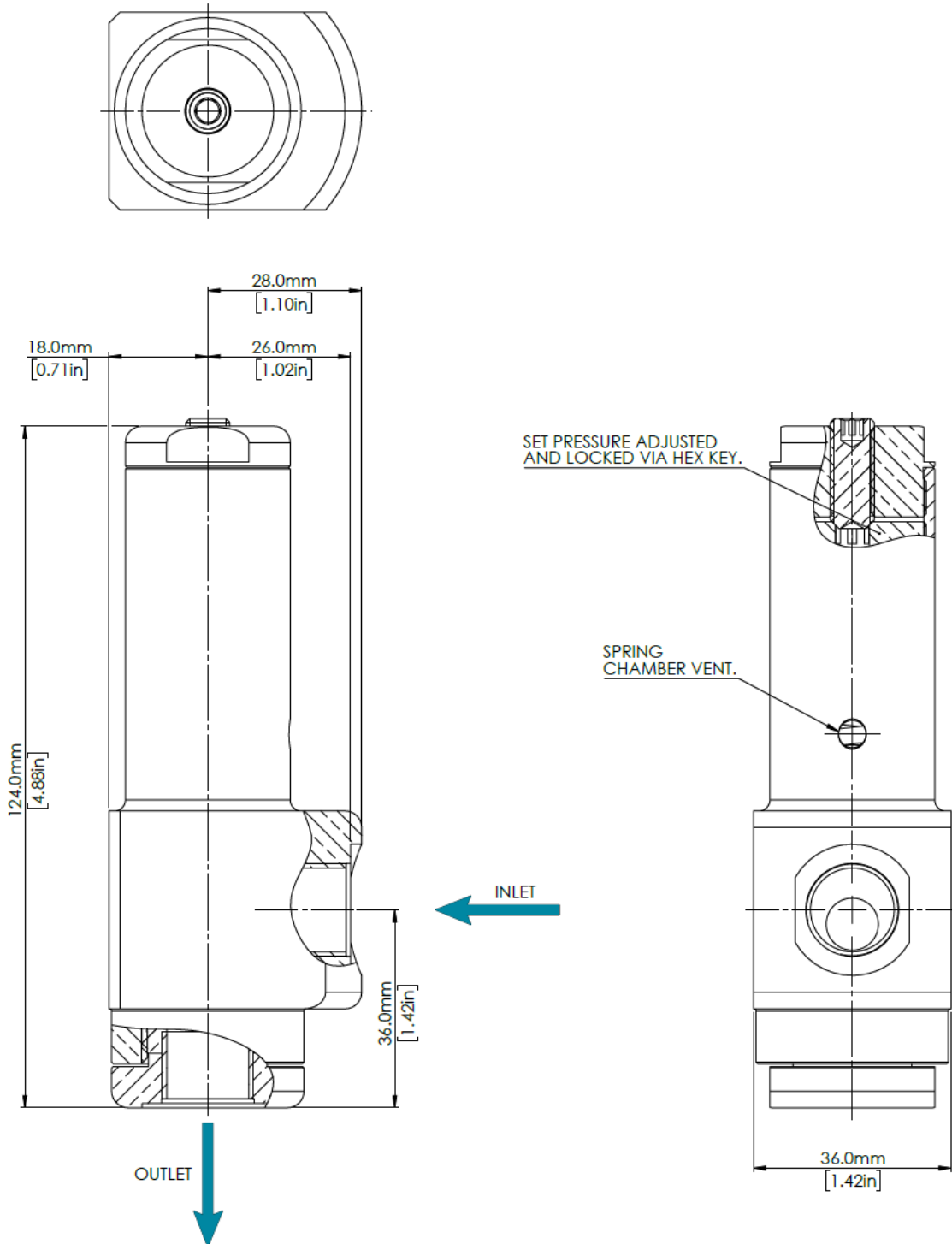
Body	See product selector
Stem (main valve)	1.4404 (316L Stainless Steel)
Seat	See product selector
Back-up rings	PTFE
O-rings	See product selector
Trim	A4 Stainless Steel

### VALVE SYMBOL



## DIMENSIONS AND INSTALLATION DETAIL

Shown with 3/8" BSPP Inlet and 3/8" BSPP Outlet





Designed and Manufactured in the UK

## MODEL CODE CONFIGURATOR COMPLETE VALVES

Product Type -	Set Pressure Range -	Porting Size Inlet -	Porting Type Inlet -	Porting Size Outlet -	Porting Type Outlet -	Material -	Seal Material -	Seat Material -
RVD10 -	1 (3 – 20 Bar)	1 (3/8")	FB (BSPP Female)	1 (3/8")	FB (BSPP Female)	1 (Aluminium)	1 (EPDM) -50°C to +140°C	1 (Nylon)
	2 (15 – 120 Bar)	2 (1/2")	FN (NPT Female)	2 (1/2")	FN (NPT Female)	2 (Brass)	2 (FKM) -20°C to +140°C	2 (Peek)
	3 (110 – 250 Bar)	3 (3/4")		3 (3/4")		3 (Stainless Steel)	3 (NBR) -30°C to +100°C	3 (PTFE)
						4 (Aluminium Bronze)	4 (HNBR) -35°C to +140°C	4 (Elastomer, as per seal material)

*Example part number: RVD10 – 1 – 2 – FB – 3 – FB – 3 – 3 – 3*

*Other options available on request. Please contact Flow Products*

## SERVICE KITS

Product Type -	Set Pressure Range -	Seal Material -	Seat Material
RVD10 -	1 (0.5 – 40 Bar)	1 (EPDM)	1 (Nylon)
	2 (30 – 120 Bar)	2 (FKM)	2 (Peek)
	3 (100 – 207 Bar)	3 (NBR)	3 (PTFE)
		4 (HNBR)	4 (Elastomer, as per seal material)

*Example part number: RVD10 – 1 – 3 – 3*