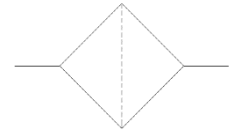


FILTERS – INLINE

FI25

VALVE SYMBOL



Gas or Liquid

Up to 500 Bar MWP

Male and Female
Porting Options

Multi-Layer Filter
Element

Ø25.0 mm Nominal
Bore (DN25)

Weight: 5.6 Kg
(Stainless Steel)

Maintain system cleanliness and minimise downtime with our high flow FI25 filter.

Robust construction, and with a selection of materials and filter ratings to choose from makes this filter suitable for a wide range of applications.

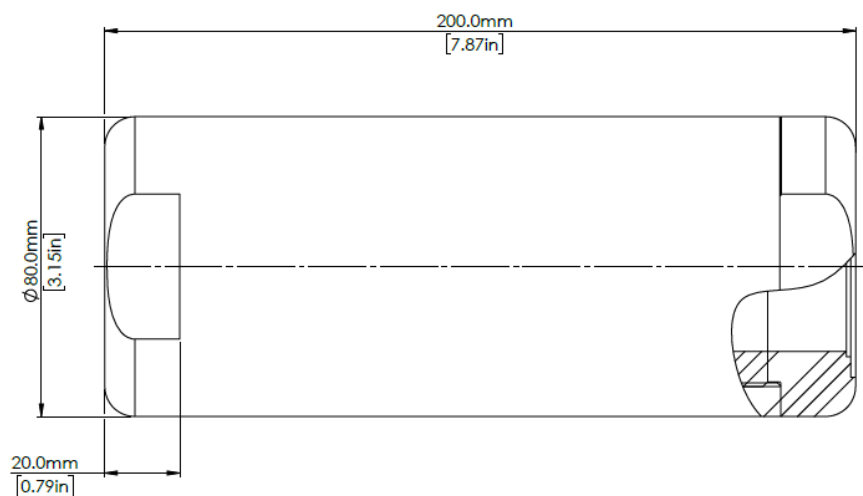
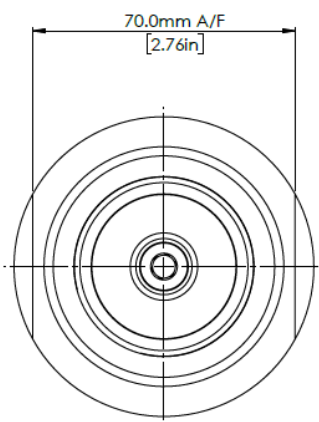
Filter elements can be flushed and cleaned to prolong life. For best results use an ultrasonic cleaner.

MATERIALS

Body	See product selector
Filter Element	316 Stainless Steel
O-rings	See product selector

DIMENSIONS AND INSTALLATION DETAILS

Shown with 1-1/2" BSPP Female Inlet and Outlet ports.





Designed and Manufactured in the UK

MODEL CODE CONFIGURATOR

COMPLETE VALVES

Product Type -	Porting Size Inlet -	Porting Type Inlet -	Porting Size Outlet -	Porting Type Outlet -	Material -	Seal -	Filtration
FI25 -	1 (1")	FB (BSPP Female)	1 (1")	FB (BSPP Female)	1 (Aluminium)	1 (EPDM) -50°C to +140°C	1 (1 Micron)
	2 (1-1/4")	FN (NPT Female)	2 (1-1/4")	FN (NPT Female)	2 (Brass)	2 (FKM) -20°C to +140°C	5 (5 Micron)
	3 (1-1/2")	MB (BSPP Male)	3 (1-1/2")	MB (BSPP Male)	3 (Stainless Steel)	3 (NBR) -30°C to +100°C	10 (10 Micron)
		MN (NPT Male)		MN (NPT Male)		4 (HNBR) -35°C to +140°C	20 (20 Micron)

Example part number: FI25 – 3 – FB – 3 – MB – 3 – 3 – 20

Other options available on request. Please contact Flow Products

Maximum working pressure

Stainless Steel: Limited to 500 Bar MWP.

Brass: Limited to 400 Bar MWP.

Aluminium: Limited to 400 Bar MWP.

BSPP Ports: Limited to 400 Bar MWP.

NPT Ports: Limited to 500 Bar MWP.

SERVICE KITS

Product Type -	Seal	Filtration -
FI25 -	1 (EPDM)	1 (1 Micron)
	2 (FKM)	5 (5 Micron)
	3 (NBR)	10 (10 Micron)
	4 (HNBR)	20 (20 Micron)

Example part number: FI25 – 3 – 20

Product specification is subject to change without notice. Flow Products can assist the customer through the product selection process on a recommendation basis only, it is the user who must ensure the product is suitable for their application.

FULL COPYRIGHT © AND DESIGN RIGHT HELD BY FLOW PRODUCTS. ALL RIGHTS RESERVED. THIS DOCUMENT MUST NOT BE COPIED OR MODIFIED IN ANY WAY.

Document number: CAT-009. Revision: 2.