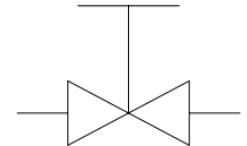


## STOP AND FLOW CONTROL VALVES

### SV8

### VALVE SYMBOL



Gas or Liquid

300 Bar MWP

-50°C to  
+140°C

DN 8

Ø6.4 mm  
Nominal Bore

Cv: 0.95

Compact  
design

Weight: 0.5 Kg  
(Stainless Steel)

Bi-directional  
Flow

The SV8 manual valve can be used either as a flow control or stop valve where tight shut off is required.

Precision machined and fine finishes where required ensure excellent leak tight integrity, making this valve ideal for Hydrogen applications.

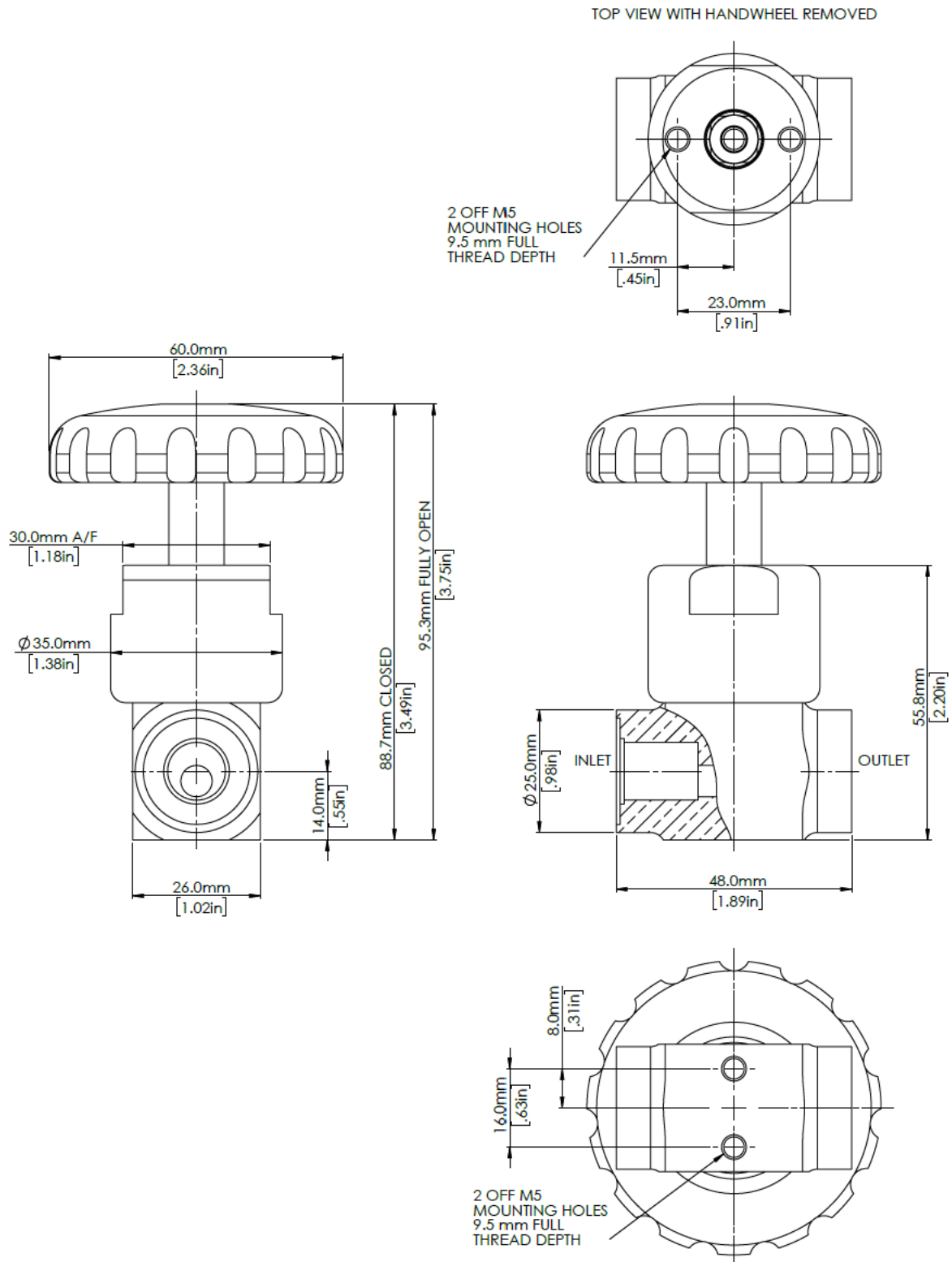
### MATERIALS

Body	See product selector
Stem	1.4404 (316L Stainless Steel)
Seat	See product selector
Back-up rings	PTFE
O-rings	See product selector
Handwheel	Aluminium Alloy
Trim	A4 Stainless Steel

**Oxygen Service.** Standard Materials listed above may differ for valves supplied for Oxygen use.

## DIMENSIONS AND INSTALLATION DETAILS

### ¼" BSPP and NPT FEMALE VARIANT



Product specification is subject to change without notice. Flow Products can assist the customer through the product selection process on a recommendation basis only, it is the user who must ensure the product is suitable for their application.

FULL COPYRIGHT © AND DESIGN RIGHT HELD BY FLOW PRODUCTS. ALL RIGHTS RESERVED. THIS DOCUMENT MUST NOT BE COPIED OR MODIFIED IN ANY WAY.

Document number: CAT-007. Revision: 2.

## MODEL CODE CONFIGURATOR

### COMPLETE VALVES

Product Type -	Porting Size -	Porting Type -	Material -	Seal Material -	Seat Material
SV8 -	1 (1/4")	FB (BSPP Female)	1 (Aluminium)	1 (EPDM) -50°C to +140°C	1 (Nylon)
	2 (3/8")	FN (NPT Female)	2 (Brass)	2 (FKM) -20°C to +140°C	2 (Peek)
	3 (1/2")	MB (BSPP Male)	3 (Stainless Steel)	3 (NBR) -30°C to +100°C	3 (Stainless Steel)
	4 (3/4")	MN (NPT Male)		4 (HNBR) -35°C to +140°C	4 (Brass)
		VCR (Male)			5 (PCTFE)

*Example part number: SV8 – 1 – FB – 2 – 1 – 3*

*Other options available on request. Please contact Flow Products*

#### Maximum working pressure

All variants: 300 Bar.

## SERVICE KITS

Product Type -	Seal Material -	Seat Material
SV8 -	1 (EPDM)	1 (Nylon)
	2 (FKM)	2 (Peek)
	3 (NBR)	3 (Stainless Steel)
	4 (HNBR)	

*Example part number: SV8 – 3 – 3*