

## BACK PRESSURE VALVES

### BPH8

Gas or Liquid

500 Bar Maximum  
Inlet Pressure

10 - 500 Bar Set  
Pressure Range

-50°C to +140°C

Easy to adjust set  
pressure

DN 8

Ø6.4mm Nominal  
Bore

Weight: 1.5Kg  
(Stainless Steel)

The versatile BPH8 Back Pressure Valve is compact, robust, offers a wide range of set pressures, and is also highly customisable.

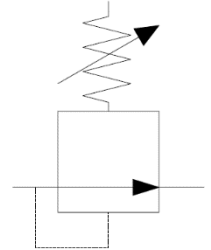
The seat and valve design ensure a smooth and controlled pressure relief and excellent re-seat.

The valve has been designed to be used with a wide range of gasses and liquids. Component parts are precision machined and include fine finishes where required to ensure excellent leak tight integrity even with the most searching of mediums.

### MATERIALS

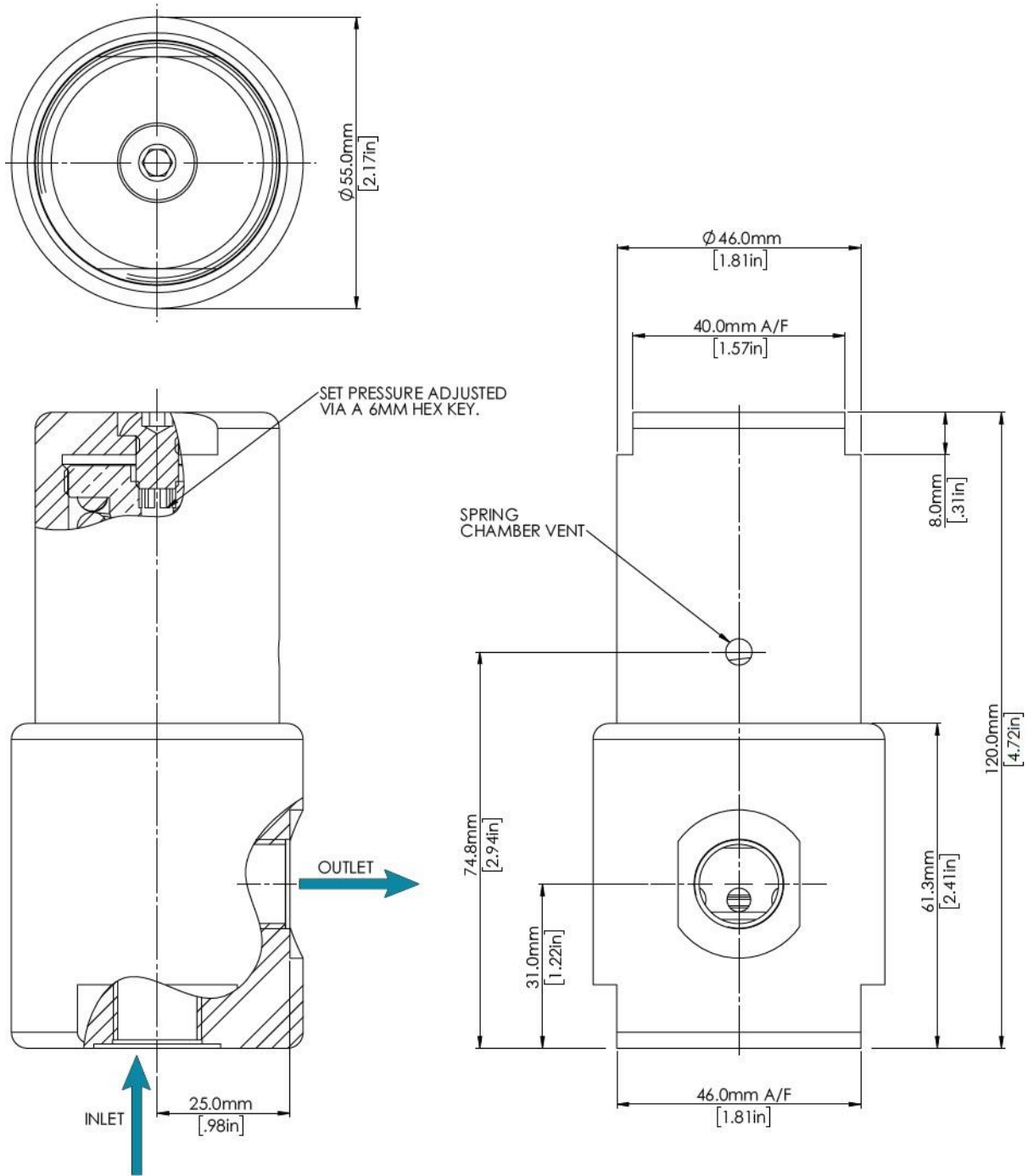
Body	See product selector
Stem (main valve)	1.4404 (316L Stainless Steel)
Seat	See product selector
Back-up rings	PTFE
O-rings	See product selector
Trim	A4 Stainless Steel

### VALVE SYMBOL

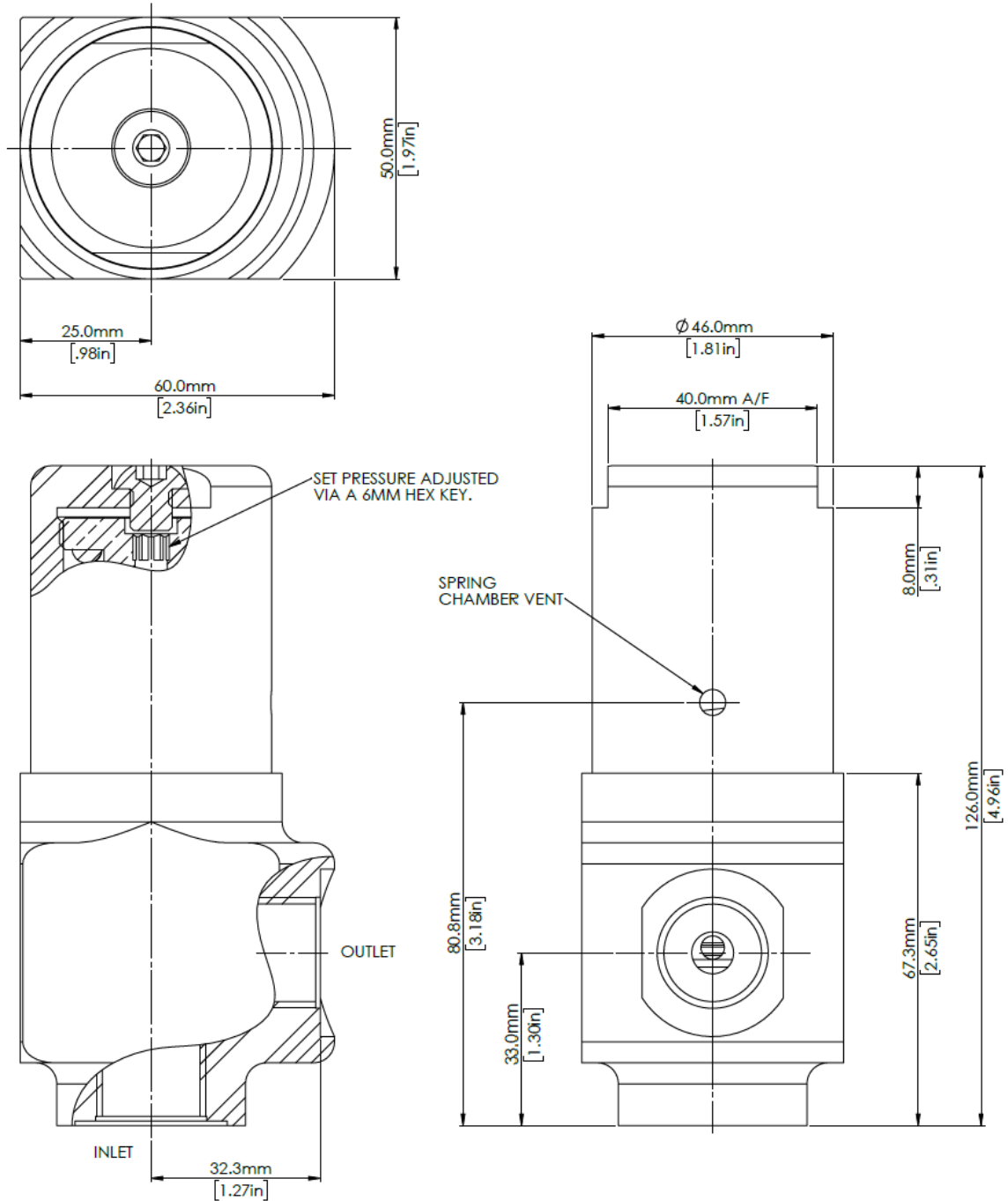


## DIMENSIONS AND INSTALLATION DETAIL

### 1/4" AND 3/8" PORTS



## 1/2" PORTS



Product specification is subject to change without notice. Flow Products can assist the customer through the product selection process on a recommendation basis only, it is the user who must ensure the product is suitable for their application.

FULL COPYRIGHT © AND DESIGN RIGHT HELD BY FLOW PRODUCTS. ALL RIGHTS RESERVED. THIS DOCUMENT MUST NOT BE COPIED OR MODIFIED IN ANY WAY.

Document number: CAT-016. Revision: 2.

## MODEL CODE CONFIGURATOR COMPLETE VALVES

Product Type -	Set Pressure Range -	Porting Size -	Porting Type -	Material -	Seal Material -	Seat Material -
BPH8 -	1 (10 – 90 Bar)	1 (1/4")	FB (BSPP Female)	1 (Aluminium)	1 (EPDM) -50°C to +140°C	1 (Nylon)
	2 (80 – 150 Bar)	2 (3/8")	FN (NPT Female)	2 (Brass)	2 (FKM) -20°C to +140°C	2 (Peek)
	3 (140 – 500 Bar)	3 (1/2")		3 (Stainless Steel)	3 (NBR) -30°C to +100°C	3 (PTFE)
				4 (Aluminium Bronze)	4 (HNBR) -35°C to +140°C	4 (PCTFE)

*Example part number: BPH8 – 3 – 2 – FB – 3 – 3 – 2*

*Other options available on request. Please contact Flow Products*

### Maximum working pressure

Stainless Steel: Limited to 500 Bar MWP.

Brass: Limited to 400 Bar MWP.

Aluminium: Limited to 400 Bar MWP.

Aluminium Bronze: Limited to 400 Bar MWP.

BSPP Ports: Limited to 450 Bar MWP.

NPT Ports: Limited to 500 Bar MWP.

## SERVICE KITS

Product Type -	Set Pressure Range -	Seal Material -	Seat Material
BPH8 -	1 (10 – 90 Bar)	1 (EPDM)	1 (Nylon)
	2 (80 – 150 Bar)	2 (FKM)	2 (Peek)
	3 (140 – 500 Bar)	3 (NBR)	3 (PTFE)
		4 (HNBR)	4 (PCTFE)

*Example part number: BPH8 – 3 – 3 – 2*