

RELIEF VALVES

RVD6

Gas or Liquid

450 Bar Maximum Inlet Pressure

~0.5 - 380 Bar Set Pressure Range

-50°C to +140°C

Easy to adjust set pressure

DN 6

Ø3.2mm Nominal Bore

Weight: 0.77Kg (Stainless Steel)

The versatile RVD6 Differential Pressure Relief Valve is compact, robust, and offers a wide range of set pressures.

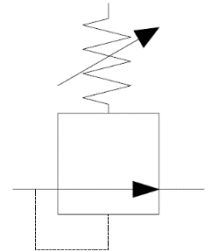
The seat and valve design ensure a smooth and controlled pressure relief and excellent re-seat.

The valve has been designed to be used with a wide range of gasses and liquids. Component parts are precision machined and include fine finishes where required to ensure excellent leak tight integrity even with the most searching of mediums.

MATERIALS

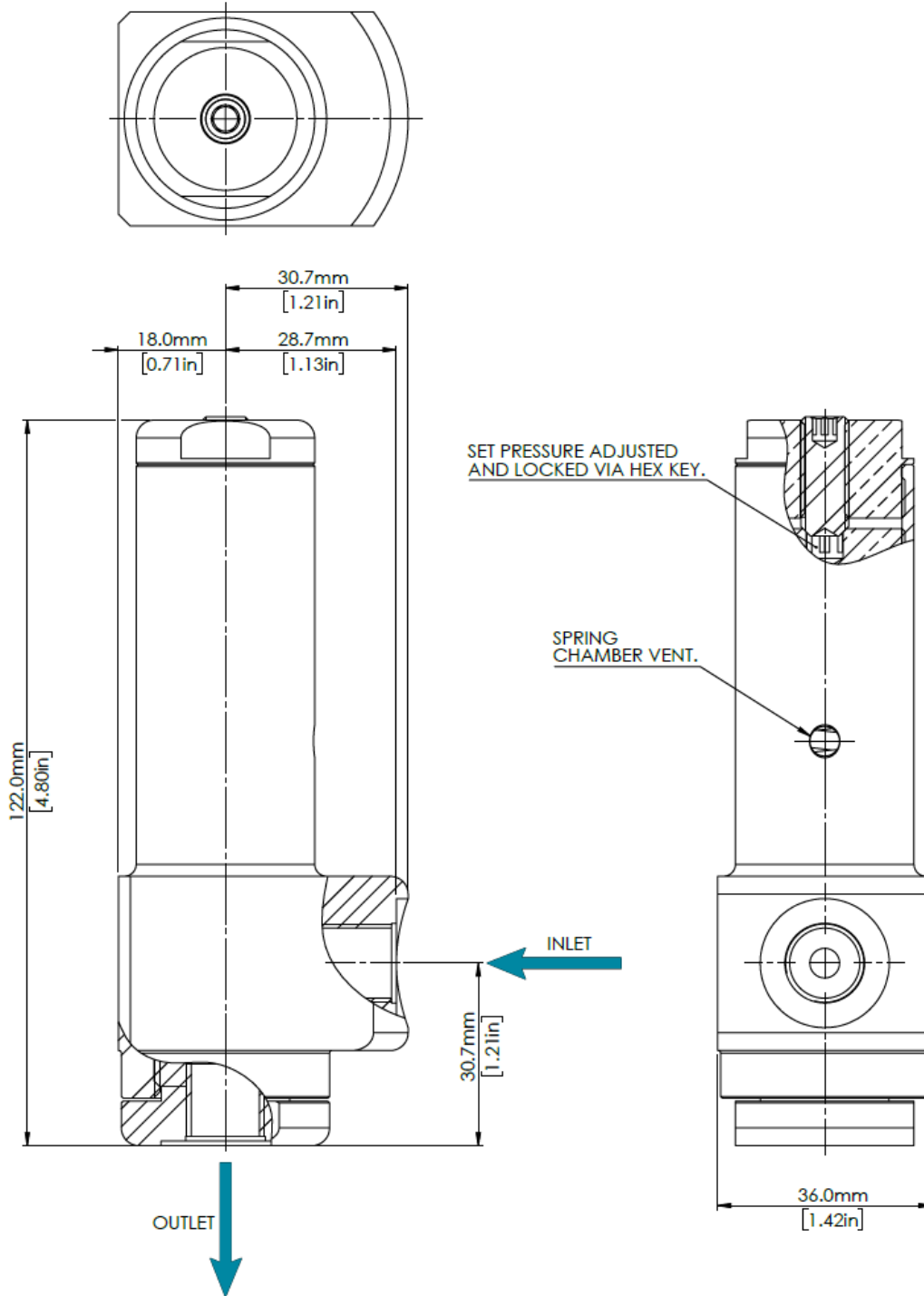
Body	See product selector
Stem (main valve)	1.4404 (316L Stainless Steel)
Seat	See product selector
Back-up rings	PTFE
O-rings	See product selector
Trim	A4 Stainless Steel

VALVE SYMBOL



DIMENSIONS AND INSTALLATION DETAIL

Shown with 1/4"BSPP Inlet and 1/4" BSPP Outlet





Designed and Manufactured in the UK

MODEL CODE CONFIGURATOR COMPLETE VALVES

Product Type -	Set Pressure Range -	Porting Size Inlet -	Porting Type Inlet -	Porting Size Outlet -	Porting Type Outlet -	Material -	Seal Material -	Seat Material -
RVD6 -	1 (10 – 40 Bar)	1 (1/4")	FB (BSPP Female)	1 (1/4")	FB (BSPP Female)	1 (Aluminium)	1 (EPDM) -50°C to +140°C	1 (Nylon)
	2 (30 – 200 Bar)	2 (3/8")	FN (NPT Female)	2 (3/8")	FN (NPT Female)	2 (Brass)	2 (FKM) -20°C to +140°C	2 (Peek)
	3 (190 – 380 Bar)					3 (Stainless Steel)	3 (NBR) -30°C to +100°C	3 (PTFE)
						4 (Aluminium Bronze)	4 (HNBR) -35°C to +140°C	

Example part number: RVD6 – 3 – 1 – FB – 1 – FB – 3 – 3 – 3

Other options available on request. Please contact Flow Products

SERVICE KITS

Product Type -	Set Pressure Range -	Seal Material -	Seat Material
RVD6 -	1 (10 – 40 Bar)	1 (EPDM)	1 (Nylon)
	2 (30 – 200 Bar)	2 (FKM)	2 (Peek)
	3 (190 – 380 Bar)	3 (NBR)	3 (PTFE)
		4 (HNBR)	

Example part number: RVD6 – 3 – 3 – 3