

RELIEF VALVES

RV10

Gas or Liquid

132 Bar Maximum Inlet Pressure

~0.5 - 120 Bar Set Pressure Range

-50°C to +140°C

Easy to adjust set pressure

DN 10

Ø9.5mm Nominal Bore

Weight: 0.97Kg (Stainless Steel)

The versatile RV10 Relief Valve is compact, robust, and offers a wide range of set pressures.

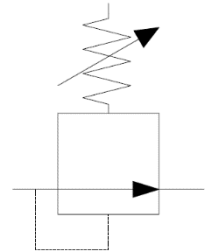
The seat and valve design ensure a smooth and controlled pressure relief and excellent re-seat.

The valve has been designed to be used with a wide range of gasses and liquids. Component parts are precision machined and include fine finishes where required to ensure excellent leak tight integrity even with the most searching of mediums.

MATERIALS

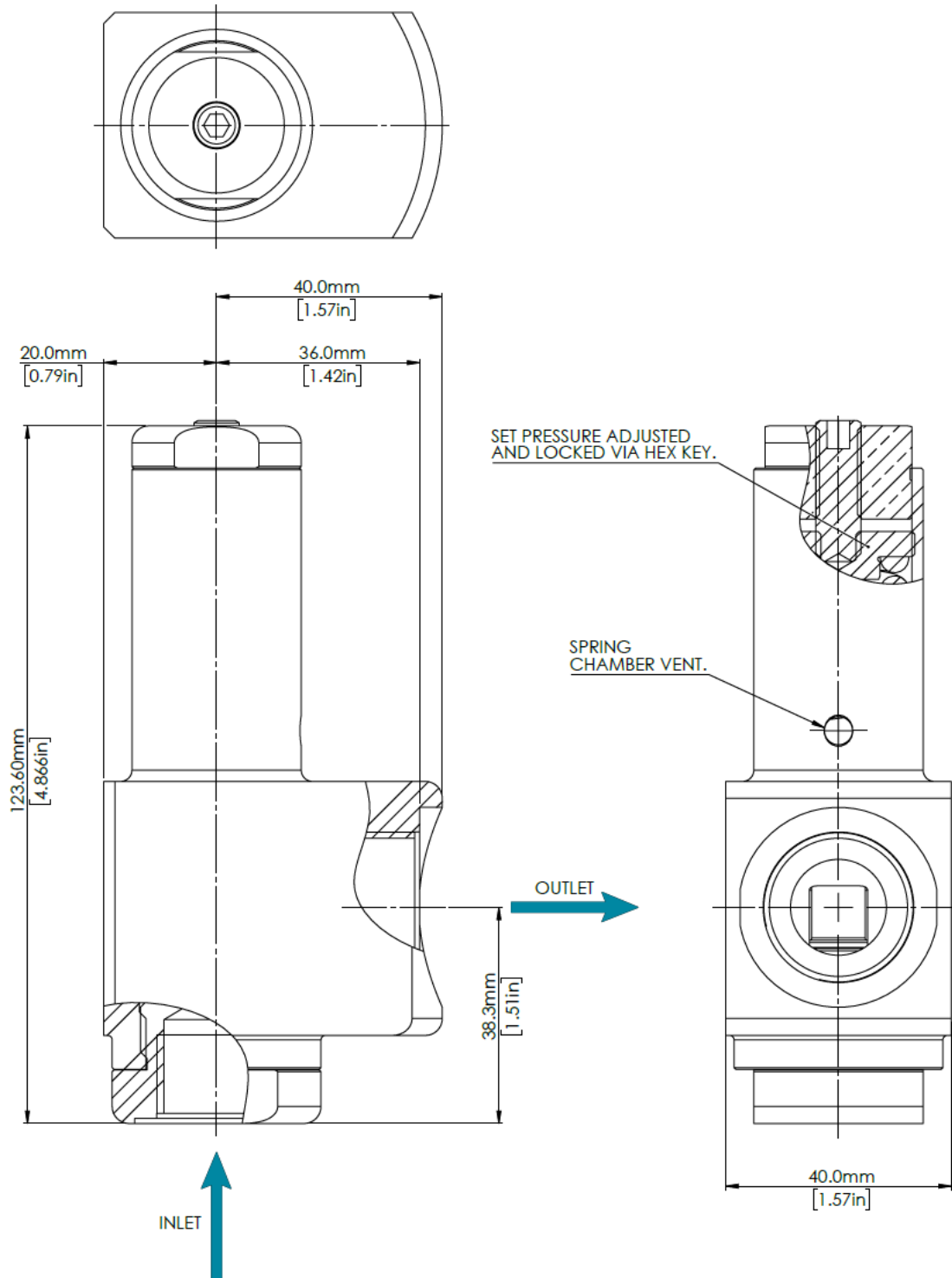
Body	See product selector
Stem (main valve)	1.4404 (316L Stainless Steel)
Seat	See product selector
Back-up rings	PTFE
O-rings	See product selector
Trim	A4 Stainless Steel

VALVE SYMBOL



DIMENSIONS AND INSTALLATION DETAIL

Shown with 1/2" BSPP Inlet and 3/4" BSPP Outlet





Designed and Manufactured in the UK

MODEL CODE CONFIGURATOR COMPLETE VALVES

Product Type -	Set Pressure Range -	Porting Size Inlet -	Porting Type Inlet -	Porting Size Outlet -	Porting Type Outlet -	Material -	Seal Material -	Seat Material -
RV10 -	1 (0.5 – 40 Bar)	1 (3/8")	FB (BSPP Female)	1 (3/8")	FB (BSPP Female)	1 (Aluminium)	1 (EPDM) -50°C to +140°C	1 (Nylon)
	2 (30 – 120 Bar)	2 (1/2")	FN (NPT Female)	2 (1/2")	FN (NPT Female)	2 (Brass)	2 (FKM) -20°C to +140°C	2 (Peek)
		3 (3/4")		3 (3/4")		3 (Stainless Steel)	3 (NBR) -30°C to +100°C	3 (PTFE)
						4 (Aluminium Bronze)	4 (HNBR) -35°C to +140°C	4 (Elastomer, as per seal material)

Example part number: RV10 – 1 – 2 – FB – 3 – FB – 3 – 3 – 4

Other options available on request. Please contact Flow Products

SERVICE KITS

Product Type -	Set Pressure Range -	Seal Material -	Seat Material
RV10 -	1 (0.5 – 40 Bar)	1 (EPDM)	1 (Nylon)
	2 (30 – 120 Bar)	2 (FKM)	2 (Peek)
		3 (NBR)	3 (PTFE)
		4 (HNBR)	4 (Elastomer, as per seal material)

Example part number: RV10 – 1 – 3 – 4