

NON-RETURN VALVES

N32

VALVE SYMBOL



Gas or Liquid
Up to 210 Bar MWP
Opening Pressure 0.1 Bar
Ø34 mm Nominal Bore (DN32)
Cv: 16
Weight: 2.65 Kg (Stainless Steel)

The N32 Non-Return Valve features a valve pad to maintain valve seat integrity during high flow.

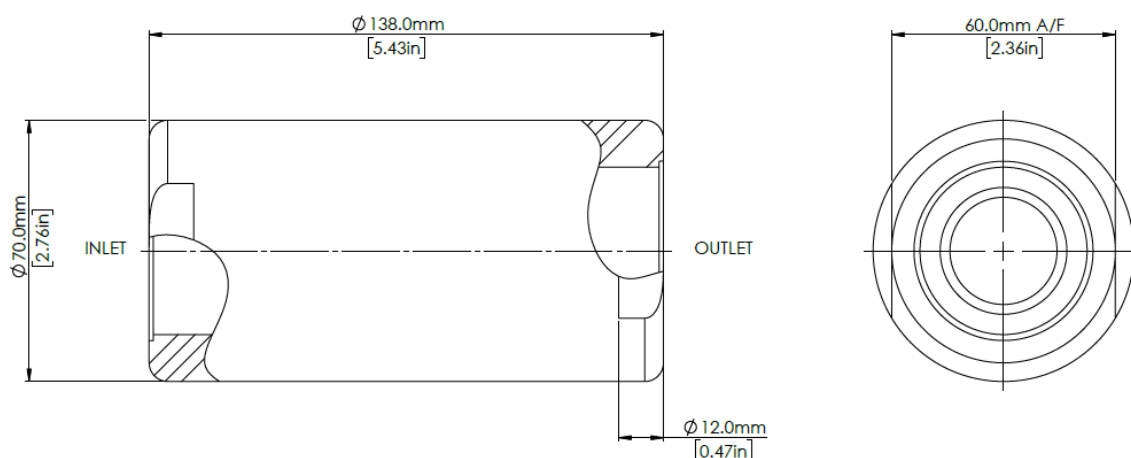
A closely guided valve reduces vibrations and oscillations at both high and low flows.

Precision machined and fine finishes where required ensure excellent leak tight integrity, making this valve ideal for Hydrogen applications.

MATERIALS

Body	See product selector
Spring	316 Stainless Steel
Seat Pad	See product selector
O-rings	See product selector
Valve	Brass

DIMENSIONS AND INSTALLATION DETAILS



MODEL CODE CONFIGURATOR

COMPLETE VALVES

Product Type -	Porting Size -	Porting Type -	Material -	Seal and Seat Pad Material
N32 -	1 (1-1/4")	FB (BSPP Female)	1 (Aluminium)	1 (EPDM) -50°C to +140°C
	2 (1-1/2")	FN (NPT Female)	2 (Brass)	2 (FKM) -20°C to +140°C
			3 (Stainless Steel)	3 (NBR) -30°C to +100°C
				4 (HNBR) -35°C to +140°C
				5 (PTFE) -60°C to +180°C

Example part number: N32 – 2 – FB – 3 – 3

Other options available on request. Please contact Flow Products

Maximum working pressure

All configurations: Limited to 210 Bar MWP.

SERVICE KITS

Product Type -	Seal and Seat Pad Material
N32 -	1 (EPDM)
	2 (FKM)
	3 (NBR)
	4 (HNBR)
	5 (PTFE)

Example part number: N32 – 3