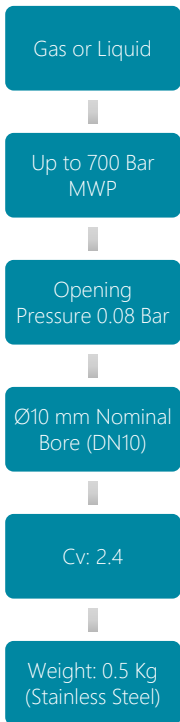


NON-RETURN VALVES

N10

VALVE SYMBOL



The N10 Non-Return Valve features a valve pad to maintain valve seat integrity during high flow.

Closely guided valve reduces vibrations and oscillations at both high and low flows.

Precision machined and fine finishes where required ensure excellent leak tight integrity, making this valve ideal for Hydrogen applications.

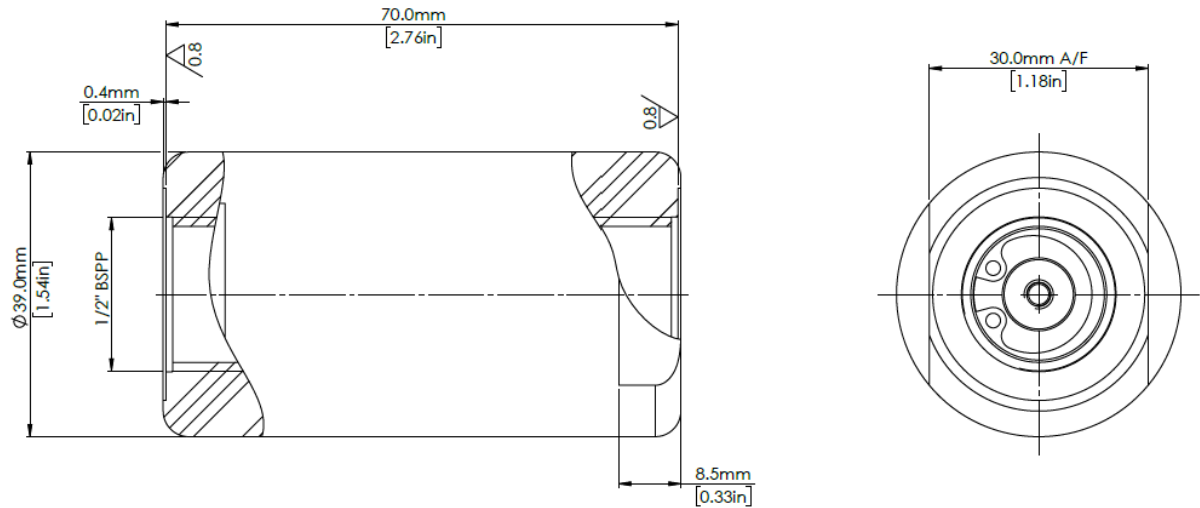


MATERIALS

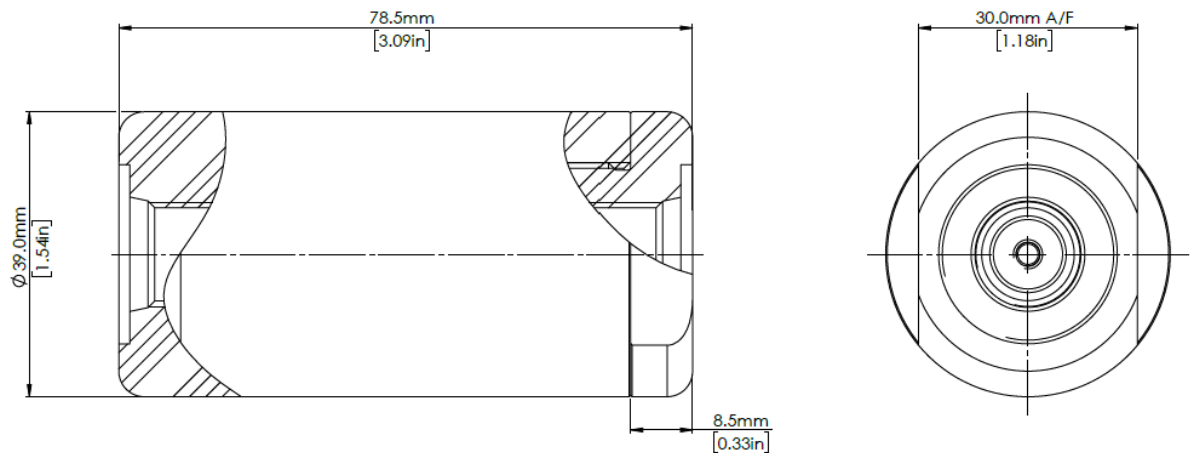
Body	See product selector
Spring	316 Stainless Steel
Seat Pad	See product selector
O-rings	See product selector
Valve	Brass

DIMENSIONS AND INSTALLATION DETAILS

½" BSPP AND ½" NPT FEMALE VARIANT



ALL OTHER FEMALE PORT TYPES





Designed and Manufactured in the UK

MODEL CODE CONFIGURATOR

COMPLETE VALVES

Product Type -	Porting Size -	Porting Type -	Material -	Seal and Seat Pad Material
N10 -	1 (3/8")	FB (BSPP Female)	1 (Aluminium)	1 (EPDM) -50°C to +140°C
	2 (1/2")	FN (NPT Female)	2 (Brass)	2 (FKM) -20°C to +140°C
	3 (9/16"-18 UNF for SAE)	FS (SAE Female)	3 (Stainless Steel)	3 (NBR) -30°C to +100°C
		VCR (Male)		4 (HNBR) -35°C to +140°C

Example part number: N10 – 2 – FB – 3 – 3

Other options available on request. Please contact Flow Products

Maximum working pressure

Stainless Steel: Limited to 700 Bar MWP.

Brass: Limited to 450 Bar MWP.

Aluminium: Limited to 450 Bar MWP.

BSPP Ports: Limited to 450 Bar MWP.

NPT Ports: Limited to 700 Bar MWP

SAE Ports: Limited to 700 Bar MWP

SERVICE KITS

Product Type -	Seal and Seat Pad Material
N10 -	1 (EPDM)
	2 (FKM)
	3 (NBR)
	4 (HNBR)

Example part number: N10 – 3