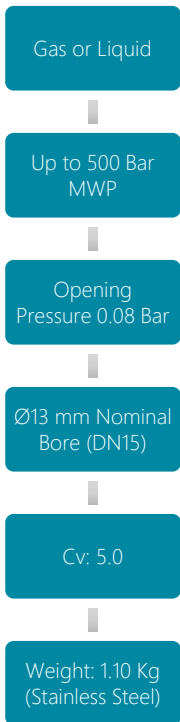


NON-RETURN VALVES

N15



The N15 Non-Return Valve features a valve pad to maintain valve seat integrity during high flow.

A closely guided valve reduces vibrations and oscillations at both high and low flows.

Precision machined and fine finishes where required ensure excellent leak tight integrity, making this valve ideal for Hydrogen applications.

VALVE SYMBOL

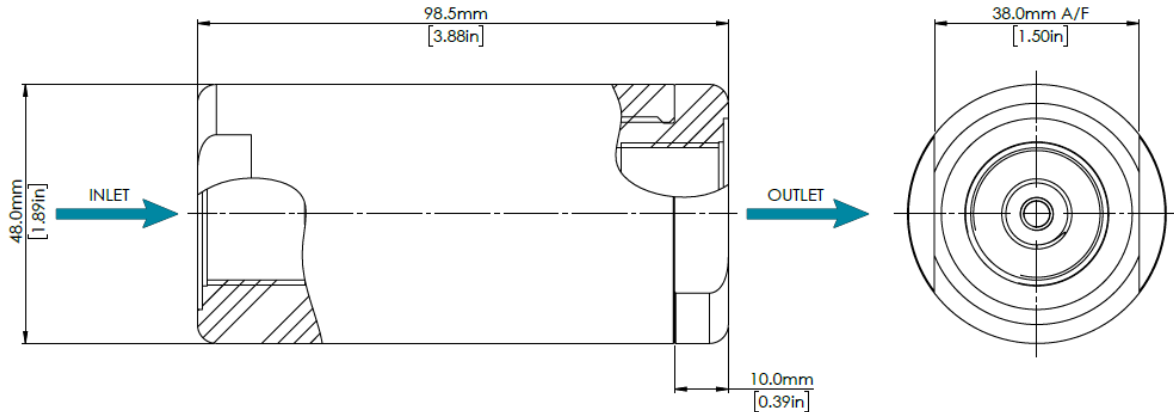


MATERIALS

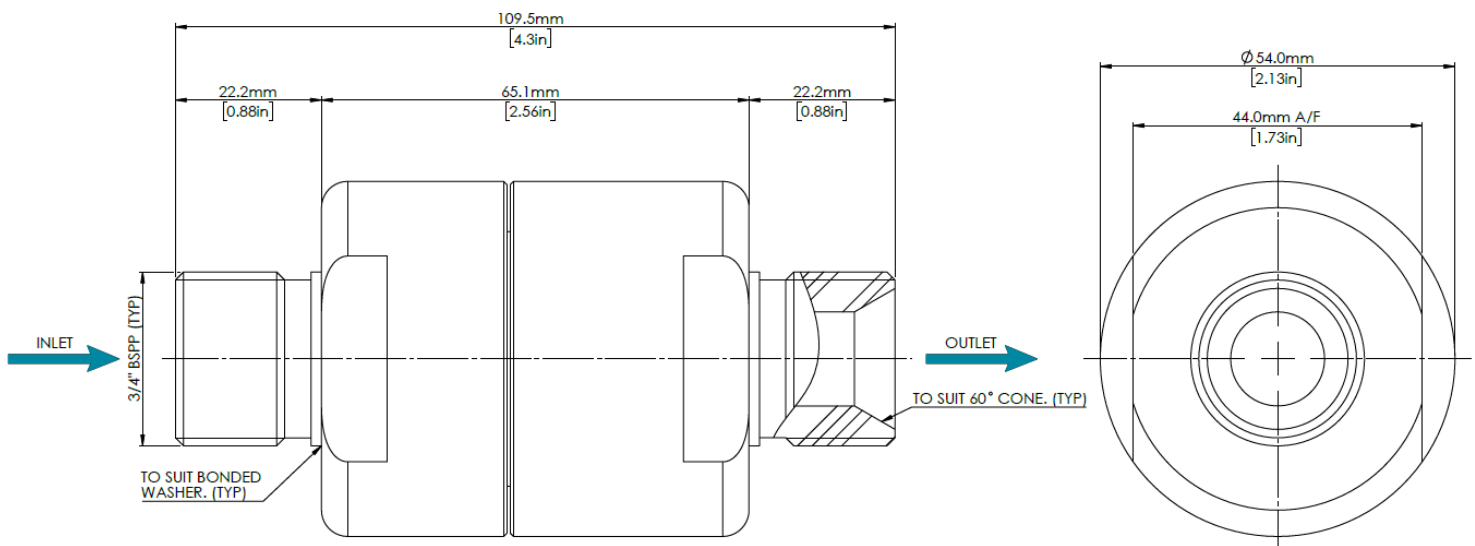
Body	See product selector
Spring	316 Stainless Steel
Seat Pad	See product selector
O-rings	See product selector
Valve	Brass

DIMENSIONS AND INSTALLATION DETAILS

Shown with ½" BSPP Female Ports



Shown with ¾" BSPP Male Ports





Designed and Manufactured in the UK

MODEL CODE CONFIGURATOR

COMPLETE VALVES

Product Type -	Porting Size -	Porting Type -	Material -	Seal and Seat Pad Material
N15 -	1 (1/2")	FB (BSPP Female)	1 (Aluminium)	1 (EPDM) -50°C to +140°C
	2 (3/4")	FN (NPT Female)	2 (Brass)	2 (FKM) -20°C to +140°C
		MB (BSPP Male)	3 (Stainless Steel)	3 (NBR) -30°C to +100°C
		MN (NPT Male)		4 (HNBR) -35°C to +140°C

Example part number: N15 – 2 – FB – 3 – 3

Other options available on request. Please contact Flow Products

Maximum working pressure

Stainless Steel: Limited to 500 Bar MWP.

Brass: Limited to 450 Bar MWP.

Aluminium: Limited to 450 Bar MWP.

BSPP Ports: Limited to 450 Bar MWP.

NPT Ports: Limited to 500 Bar MWP

SERVICE KITS

Product Type -	Seal and Seat Pad Material
N15 -	1 (EPDM)
	2 (FKM)
	3 (NBR)
	4 (HNBR)

Example part number: N15 – 3