

FILTERS – INLINE

FI15

Gas or Liquid

Up to 500 Bar
MWP

Multi-Layer Filter
Element

Ø13.0 mm
Nominal Bore
(DN15)

Weight: 1.7 Kg
(Stainless Steel)

Maintain system cleanliness and minimise downtime with our compact FI15 filter.

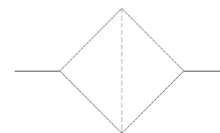
Robust construction, and with a selection of materials and filter ratings to choose from makes this filter suitable for a wide range of applications.

Filter elements can be flushed and cleaned to prolong life. For best results use an ultrasonic cleaner.

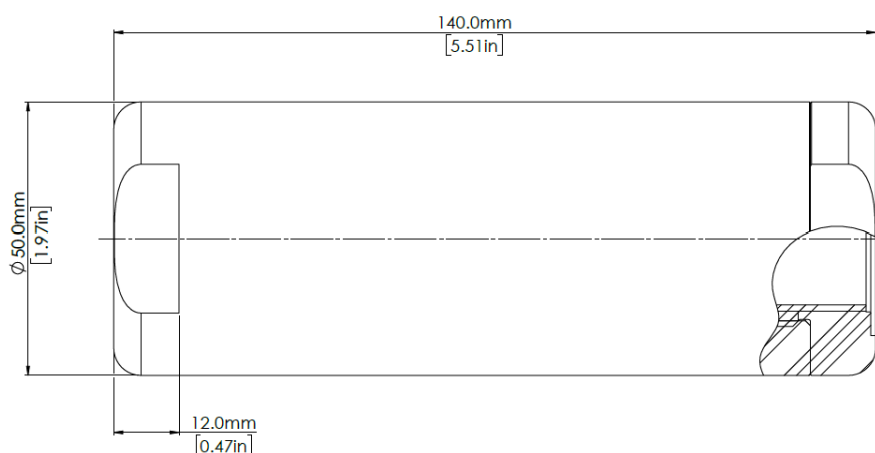
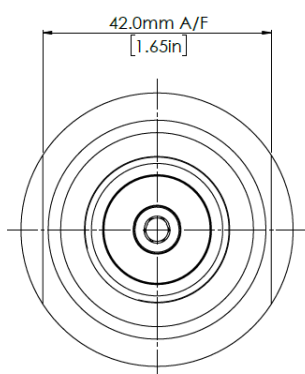
MATERIALS

Body	See product selector
Filter Element	316 Stainless Steel
O-rings	See product selector

VALVE SYMBOL



DIMENSIONS AND INSTALLATION DETAILS



MODEL CODE CONFIGURATOR

COMPLETE VALVES

Product Type -	Porting Size -	Porting Type -	Material -	Seal -	Filtration
FI15 -	1 (1/2")	FB (BSPP Female)	1 (Aluminium)	1 (EPDM) -50°C to +140°C	1 (1 Micron)
	2 (3/4")	FN (NPT Female)	2 (Brass)	2 (FKM) -20°C to +140°C	5 (5 Micron)
			3 (Stainless Steel)	3 (NBR) -30°C to +100°C	10 (10 Micron)
				4 (HNBR) -35°C to +140°C	20 (20 Micron)

Example part number: FI15 – 2 – FB – 3 – 3 – 20

Other options available on request. Please contact Flow Products

Maximum working pressure

Stainless Steel: Limited to 500 Bar MWP.

Brass: Limited to 400 Bar MWP.

Aluminium: Limited to 400 Bar MWP.

BSPP Ports: Limited to 400 Bar MWP.

NPT Ports: Limited to 500 Bar MWP.

SERVICE KITS

Product Type -	Seal	Filtration -
FI15 -	1 (EPDM)	1 (1 Micron)
	2 (FKM)	5 (5 Micron)
	3 (NBR)	10 (10 Micron)
	4 (HNBR)	20 (20 Micron)

Example part number: FI15 – 3 – 20