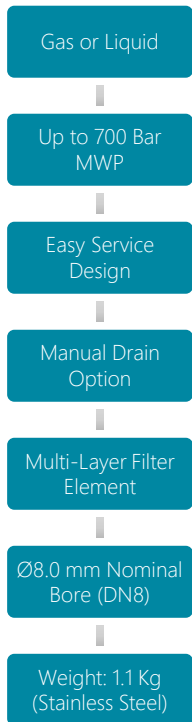


FILTERS – ‘T’ TYPE

FT8

VALVE SYMBOL



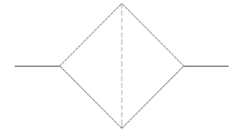
Maintain system cleanliness and minimise downtime with our FT8 easy clean filter.

Robust construction, and with a selection of materials and filter ratings to choose from makes this filter suitable for a wide range of applications.

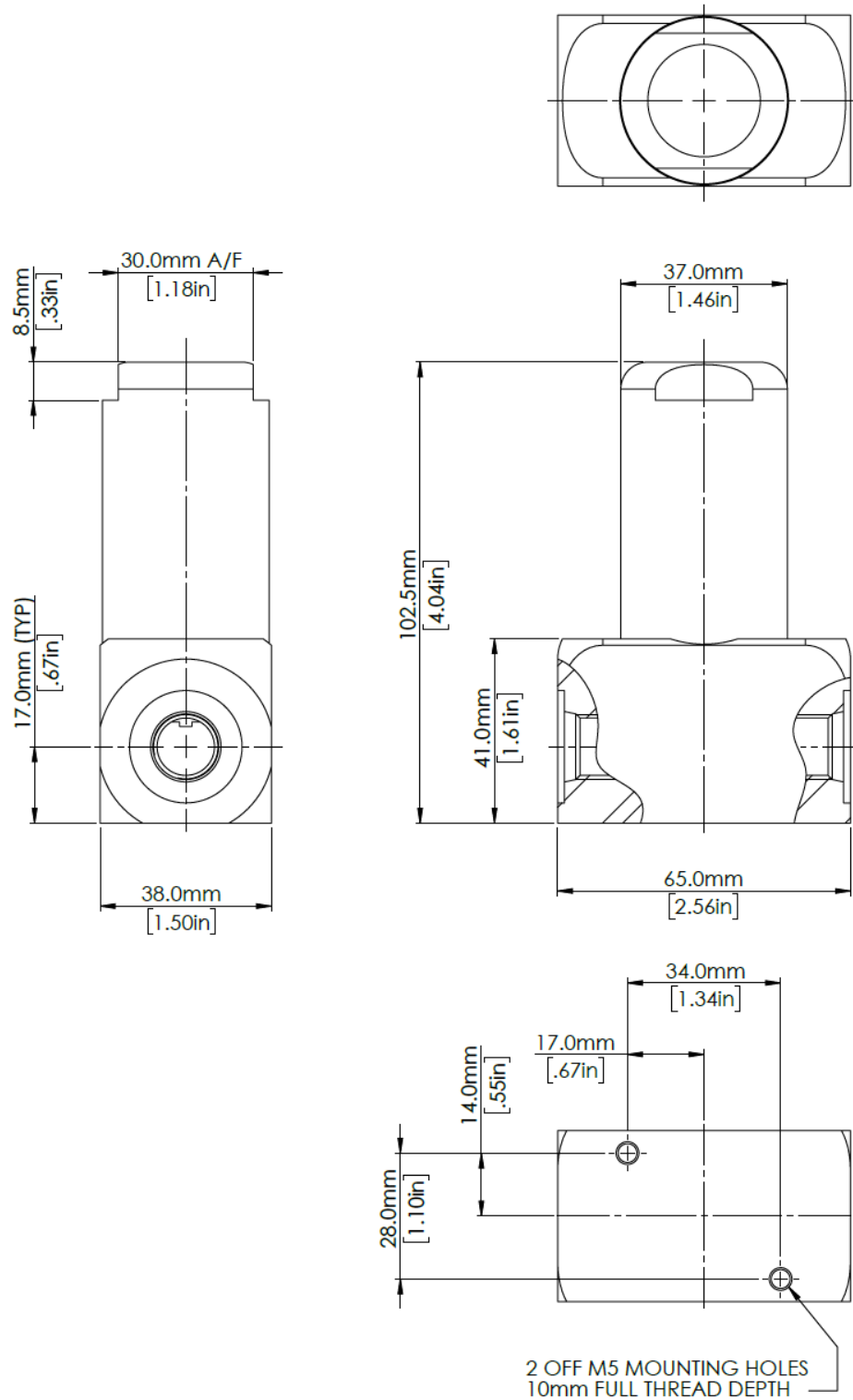
Filter elements can be flushed and cleaned to prolong life. For best results use an ultrasonic cleaner.

MATERIALS

Body	See product selector
Filter Element	316 Stainless Steel
O-rings	See product selector



DIMENSIONS AND INSTALLATION DETAILS



MODEL CODE CONFIGURATOR

COMPLETE VALVES

Product Type -	Porting Size -	Porting Type -	Material -	Seal -	Filtration -	Manual drain
FT8 -	1 (1/4")	FB (BSPP Female)	1 (Aluminium)	1 (EPDM) -50°C to +140°C	1 (1 Micron)	1 (Excluded)
	2 (3/8")	FN (NPT Female)	2 (Brass)	2 (FKM) -20°C to +140°C	5 (5 Micron)	2 (Included)
	3 (1/2")	FS (SAE Female)	3 (Stainless Steel)	3 (NBR) -30°C to +100°C	10 (10 Micron)	
	4 (9/16"-18 UNF for SAE)			4 (HNBR) -35°C to +140°C	20 (20 Micron)	

Example part number: FT8 – 2 – FB – 3 – 3 – 20 – 1

Other options available on request. Please contact Flow Products

Maximum working pressure

Stainless Steel: Limited to 700 Bar MWP.

Brass: Limited to 450 Bar MWP.

Aluminium: Limited to 450 Bar MWP.

BSPP Ports: Limited to 450 Bar MWP.

NPT Ports: Limited to 700 Bar MWP.

SAE Ports: Limited to 700 Bar MWP.

SERVICE KITS

Product Type -	Seal -	Filtration -	Manual drain
FT8 -	1 (EPDM)	1 (1 Micron)	1 (Excluded)
	2 (FKM)	5 (5 Micron)	2 (Included)
	3 (NBR)	10 (10 Micron)	
	4 (HNBR)	20 (20 Micron)	

Example part number: FT8 – 3 – 20 – 1