

STOP AND FLOW CONTROL VALVES

SVB15

Gas or Liquid
500 Bar MWP
Fully Balanced Design
Non-Rising Stem
Non-Rotating Stem
-50°C to +140°C
DN 15
Ø13.0 mm Nominal Bore
Cv: 4.0
Compact design
Weight: 3.1 Kg (Stainless Steel)
Bi-directional Flow

The high flow SVB15 manual valve can be used either as a flow control or stop valve where tight shut off is required.

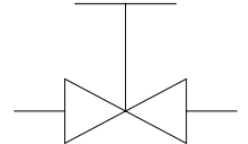
Precision machined and fine finishes where required ensure excellent leak tight integrity, making this valve ideal for Hydrogen applications.

The fully balanced design ensures a high duty cycle, as well as smooth and controlled operation even at high pressures.

MATERIALS

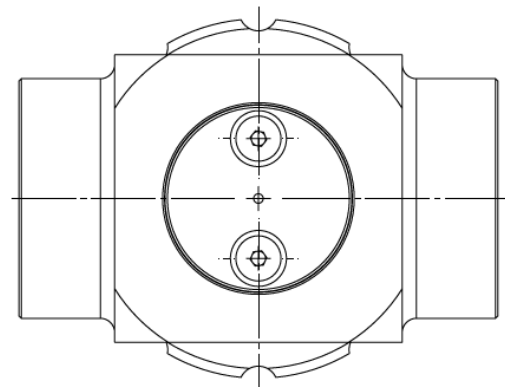
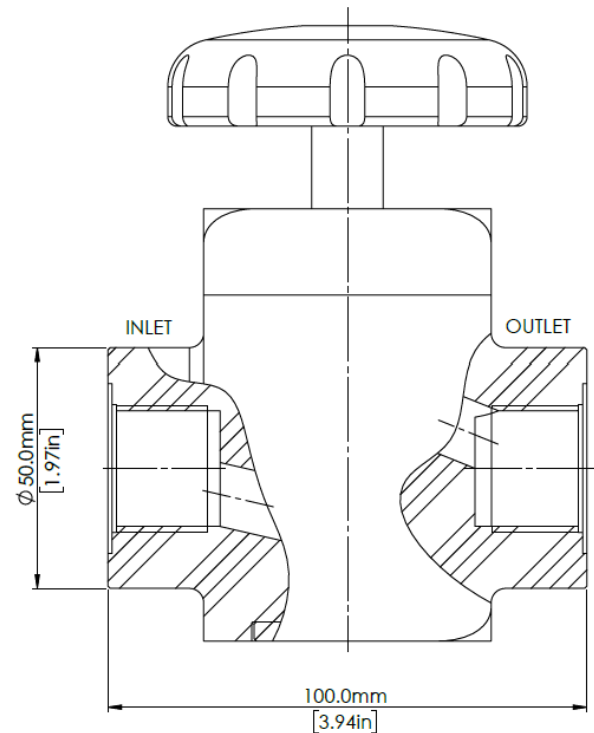
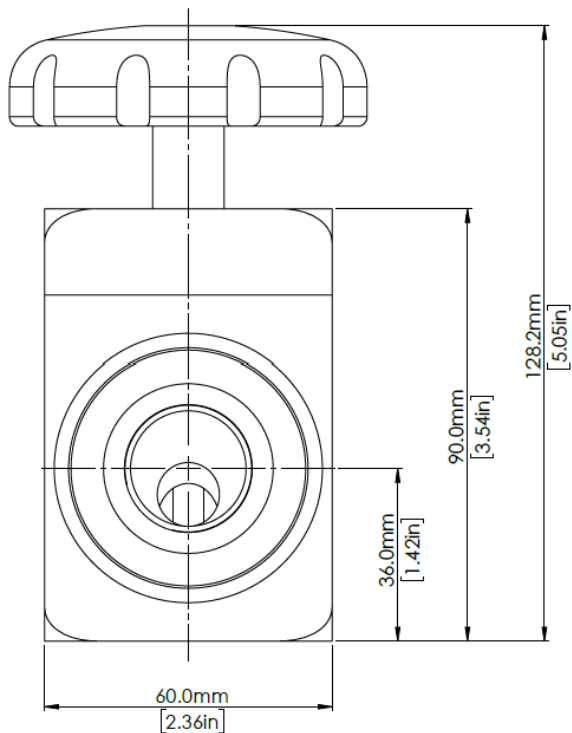
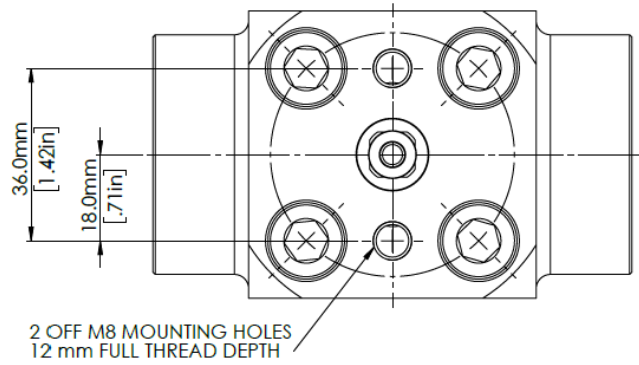
Body	See product selector
Stem	Stainless Steel
Seat	See product selector
Back-up rings	PTFE
O-rings	See product selector
Handwheel	Aluminium Alloy
Trim	A4 Stainless Steel

VALVE SYMBOL



DIMENSIONS AND INSTALLATION DETAILS

TOP VIEW WITH HANDWHEEL REMOVED



MODEL CODE CONFIGURATOR COMPLETE VALVES

Product Type -	Porting Size -	Porting Type -	Material -	Seal Material -	Seat Material
SVB15 -	1 (1/2")	FB (BSPP Female)	1 (Aluminium)	1 (EPDM) -50°C to +140°C	1 (Nylon)
	2 (3/4")	FN (NPT Female)	2 (Brass)	2 (FKM) -20°C to +140°C	2 (Peek)
		MB (BSPP Male)	3 (Stainless Steel)	3 (NBR) -30°C to +100°C	3 (Stainless Steel)
		MN (NPT Male)		4 (HNBR) -35°C to +140°C	4 (Brass)

Example part number: SVB15 – 2 – FB – 3 – 1 – 2

Other options available on request. Please contact Flow Products

Maximum working pressure

Stainless Steel: Limited to 500 Bar MWP.

Brass: Limited to 400 Bar MWP.

Aluminium: Limited to 400 Bar MWP.

BSPP Ports: Limited to 400 Bar MWP.

NPT Ports: Limited to 500 Bar MWP.

SERVICE KITS

Product Type -	Seal Material -	Seat Material
SVB15 -	1 (EPDM)	1 (Nylon)
	2 (FKM)	2 (Peek)
	3 (NBR)	3 (Stainless Steel)
	4 (HNBR)	

Example part number: SVB15 – 1 – 2