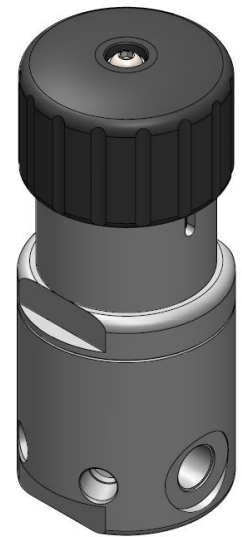
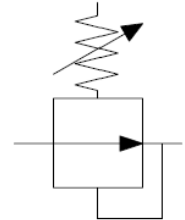


PRESSURE REDUCING VALVES

PRH6

VALVE SYMBOL



Gas or Liquid
700 Bar Maximum Inlet Pressure
Outlet Pressure up to 500 Bar
-50°C to +140°C
Diaphragm Sensed up to 70 Bar
Piston Sensed 310 Bar +
Semi Balanced
Handwheel Operation
Optional Built-In 20µm Inlet Filter
Optional Gauge Ports
DN 6
Ø4.0mm Nominal Bore
Cv: 0.20
Weight: 2.9 Kg (Stainless Steel)

The versatile PRH6 pressure reducing valve is the ideal solution for a wide range of applications. The valve is compact, robust, has been designed to handle a wide range of pressures, and is also highly customisable.

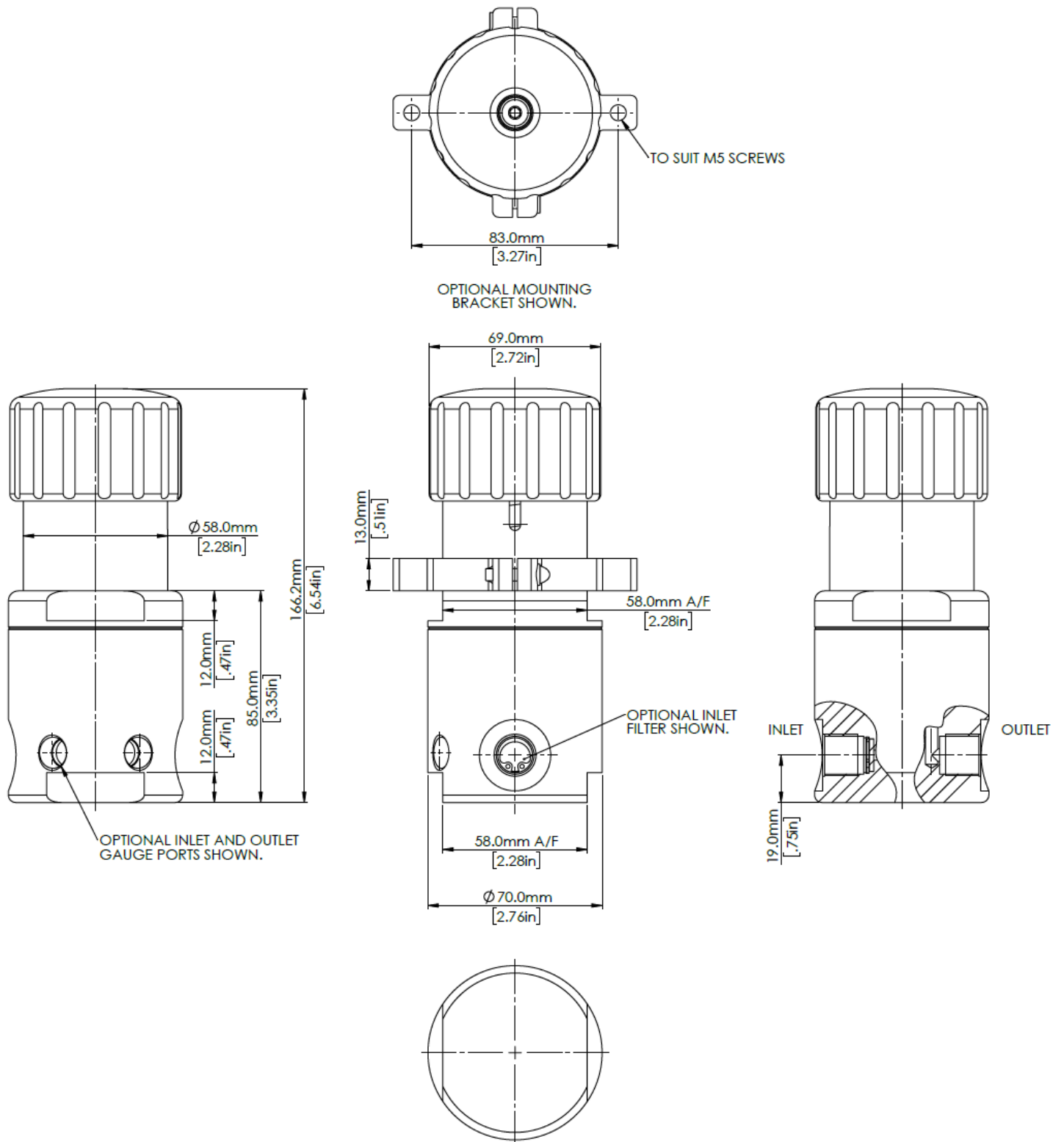
The finely tuned valve design strikes an excellent balance between high sealing force, compact design, and precisely controlled outlet pressure.

The valve has been designed to be used with a wide range of gasses and liquids. Component parts are precision machined and include fine finishes where required to ensure excellent leak tight integrity even with mediums such as Hydrogen.

MATERIALS

Body	See product selector
Stem (main valve)	1.4404 (316L Stainless Steel)
Seat	See product selector
Valve Spring (Wetted)	316 Stainless Steel
Back-up rings	PTFE
O-rings	See product selector
Handwheel	Anodised Aluminium Alloy
Trim	A4 Stainless Steel

DIMENSIONS AND INSTALLATION DETAIL





Designed and Manufactured in the UK

MODEL CODE CONFIGURATOR COMPLETE VALVES

Product Type -	Vent -	Outlet Range -	Porting Size -	Porting Type -	Material -	Seal Material -	Seat Material -	Handwheel -	Gauge Port
PRH6 -	1 (Self-Venting)	1 (~0 – 20 Bar)	1 (1/4")	FB (BSPP Female)	1 (Aluminium)	1 (EPDM) -50°C to +140°C	1 (Nylon)	1 (Standard)	1 (No gauge Port)
	2 (Non-Venting)	2 (~0 – 70 Bar)	2 (3/8")	FN (NPT Female)	2 (Brass)	2 (FKM) -20°C to +140°C	2 (Peek)	2 (Locking)	2 (1/4" NPT Gauge Ports)
		3 (~0 – 310 Bar)	3 (1/2")	VCR (Male)	3 (Stainless Steel)	3 (NBR) -30°C to +100°C	3 (Stainless Steel)		
		4 (~0 – 500 Bar)	4 (3/4")		4 (Aluminium Bronze)	4 (HNBR) -35°C to +140°C			
			5 (1")						

Example part number: PRH6 – 1 – 3 – 2 – FB – 3 – 3 – 2 – 1 – 1

Other options available on request. Please contact Flow Products

A panel mounting kit can be purchased separately. Use part number: A-00001

Maximum working pressure

Stainless Steel: Limited to 700 Bar MWP.

Brass: Limited to 400 Bar MWP.

Aluminium: Limited to 400 Bar MWP.

Aluminium Bronze: Limited to 400 Bar MWP.

BSPP Ports: Limited to 400 Bar MWP.

NPT Ports: Limited to 700 Bar MWP.

SERVICE KITS

Product Type -	Vent -	Outlet Range -	Seal Material -	Seat Material
PRH6 -	1 (Self-Venting)	1 (~0 – 20 Bar)	1 (EPDM)	1 (Nylon)
	2 (Non-Venting)	2 (~0 – 70 Bar)	2 (FKM)	2 (Peek)
		3 (~0 – 310 Bar)	3 (NBR)	3 (Stainless Steel)
		4 (~0 – 500 Bar)	4 (HNBR)	

Example part number: PRH6 – 1 – 3 – 3 – 2