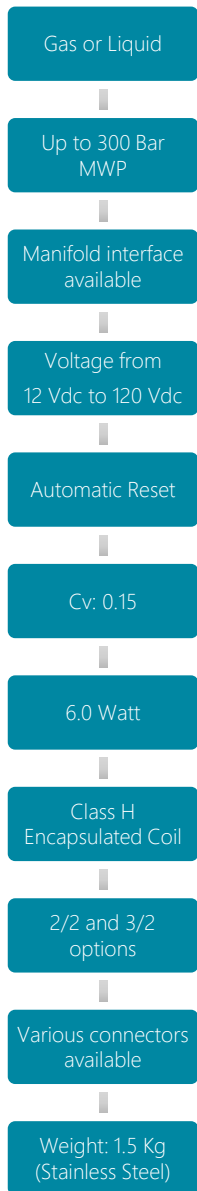


NON-RETURN VALVES

SOV1



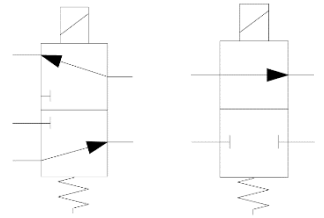
The compact and optimised SOV1 Solenoid Valve offers high force and low power consumption perfect for high pressure pilot applications and moderate flow uses.

This valve is supplied in both 2/2 and 3/2 variants and with a range of porting options including manifold mount, makes this SOV highly versatile.

MATERIALS

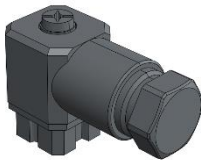
Body	See product selector
Solenoid Housing	Plated carbon steel
Spring	316 Stainless Steel
Seat Material	See product selector
O-rings	See product selector

VALVE SYMBOL

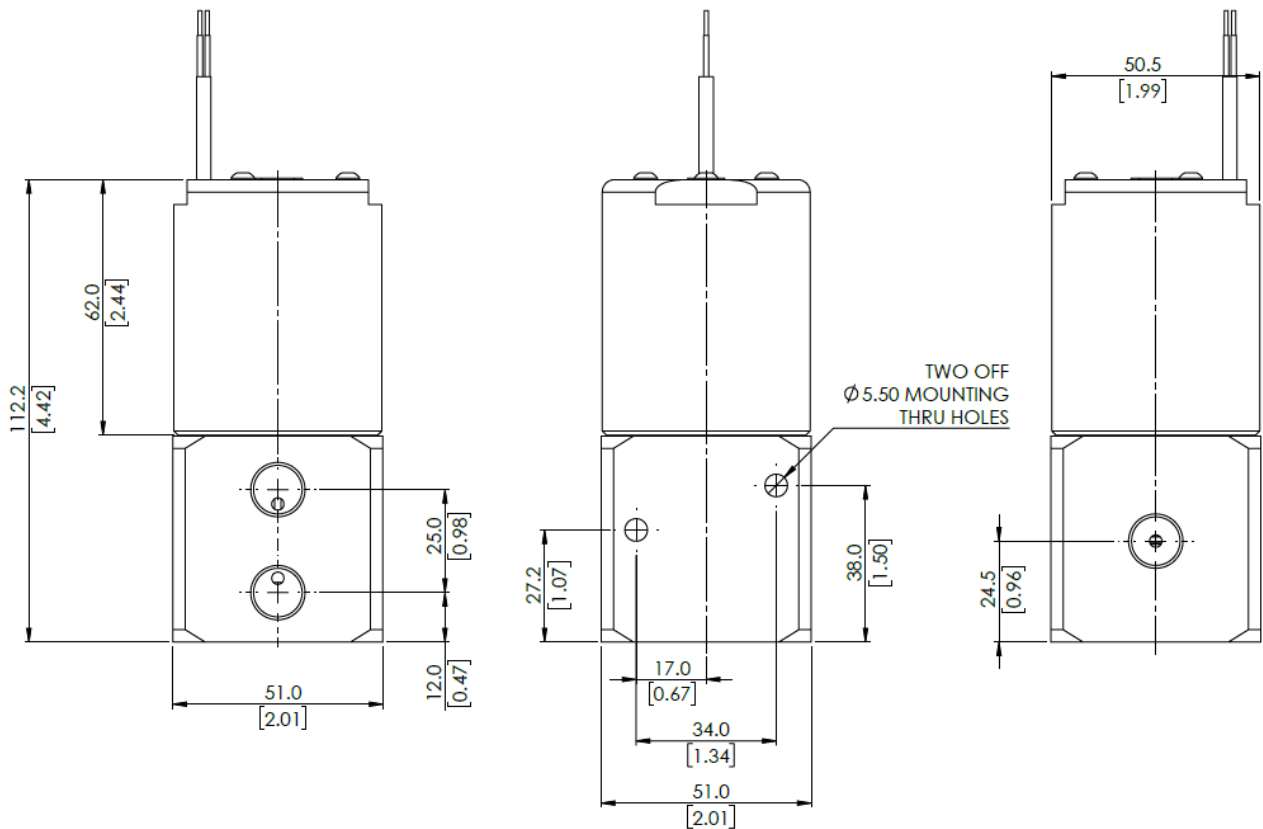
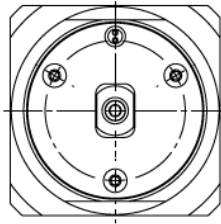


DIMENSIONS AND INSTALLATION DETAILS

3 Port 2 Position version with flying leads shown.



Hirschmann GDM
connector available





Designed and Manufactured in the UK

MODEL CODE CONFIGURATOR

COMPLETE VALVES

Product Type -	Electrical Connection -	Configuration -	Voltage -	Porting Size -	Porting Type -	Material -	Seal Material -	Seat Material
SOV1 -	1 (Flying Leads)	1 (2/2 NO)	1 (12 Vdc)	1 (1/4")	FB (BSPP Female)	1 (Aluminium)	1 (EPDM) -50°C to +140°C	1 (Peek)
	2 (Hirschmann)	2 (2/2 NC)	2 (24 Vdc)	2 (3/8")	FN (NPT Female)	2 (Brass)	2 (FKM) -20°C to +140°C	2 (Nylon)
		3 (3/2)	3 (48 Vdc)	3 (Manifold)		3 (Stainless Steel)	3 (NBR) -30°C to +100°C	
			4 (120 Vdc)				4 (HNBR) -35°C to +140°C	

Example part number: SOV1 – 1 – 2 – 2 – 1 – FB – 3 – 3 – 1

Other options available on request. Please contact Flow Products

SERVICE KITS

SOV1	1 (EPDM)	1 (Peek)
	2 (FKM)	2 (Nylon)
	3 (NBR)	
	4 (HNBR)	

Example part number: SOV1 – 3 – 1